

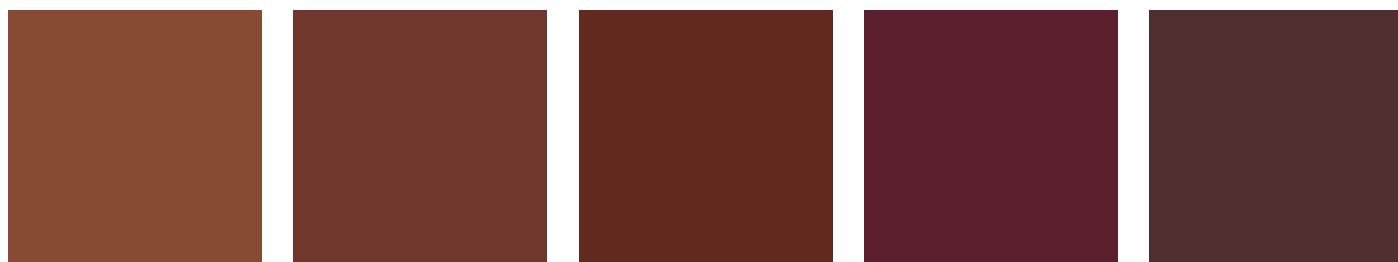
Colour palette

Exterior Colours

The colour of Collett's Corner is inspired by the sea and volcanic rock from the surrounding environment. The facade will have a range of colours picking up on the various shades of blue/green of the sea.



Exterior cladding Kingspan powder coated aluminium. Each building has a different pattern, while the colour palette remains consistent.



The railings, window frames and detailing will pick up on the rusty red/brown colours of the volcanic rock that make up the Banks Peninsula.



Interior Colours 1 - Ray of Light

Bringing the outdoors inside, this colour palette is inspired by the rays of sunlight caught in beads of dew.

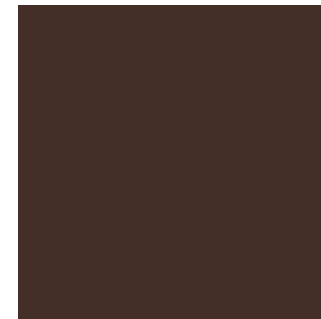
All interior paint colours are from the Resene Collection.



General



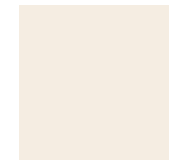
Sandcastle



Mission Brown



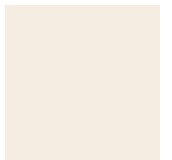
Feature walls
Mission Brown



Primary walls
Eighth Spanish
White



Secondary walls
Sandcastle



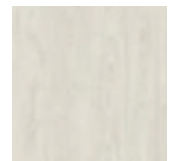
Ceiling
Eighth Spanish
White



Interior doors
Spanish White



Blinds
Block-out Roller
Sand-Fancy



Floorscape
Laminate
Timber, Classic
Oak Light

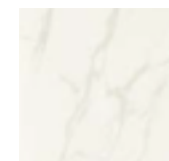


Carpet NZ wool
loop pile, Braided
River Ashburton
(2 Bedroom
Apartments)

Bathroom



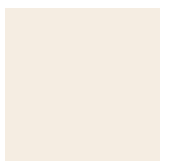
Tiles floor
and shower,
Glazed
Porcelain,
Firenze Bianco



Counter Top
Prime Laminate,
Calacutta D'Oro



Cabinetry,
Melamine
Woodgrain,
Fumed Oak



Walls / Ceiling
Eighth Spanish
White

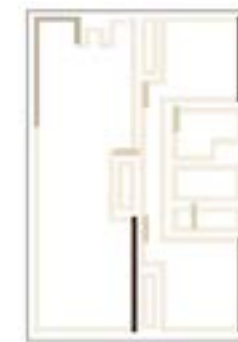
Paint Colour per Wall



Studio



One bedroom



Two bedroom

Kitchen



Counter Top
Prime Laminate,
Calacutta D'Oro



Cabinetry
Melamine
Woodgrain,
Fumed Oak



Glass
Splashback over
Sandcastle



Interior Colours 2 - Forest Light

Bringing the outdoors inside, this colour palette is inspired by the dappled light coming through a native New Zealand forest.

All interior paint colours are from the Resene Collection.

General

Feature walls Green Meets Blue	Primary walls Eighth Canterbury Clay	Secondary walls Jet Stream	Ceiling Eighth Canterbury Clay
Interior doors Santa Fe	Blinds Block-out Roller Sand-Fancy	Floorscape Laminate Midnight Oak Brown	Carpet NZ wool loop pile, Armure Portico (2 Bedroom Apartments)

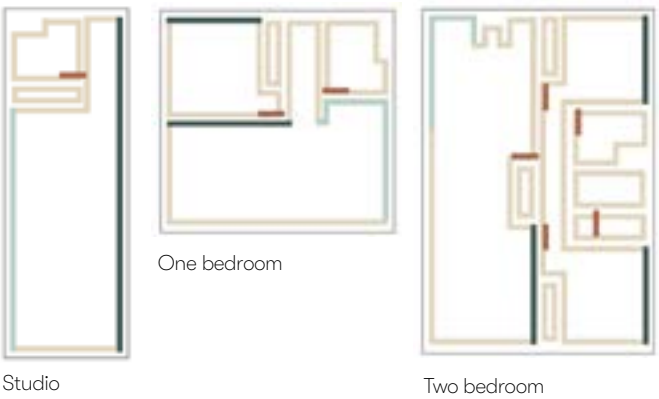
Bathroom

Tiles floor and shower, Glazed Porcelain, Quantum Linseed	Vanity top Prime Laminat Wicked Soft-Matt	Vanity Cabinetry Prime Melamine Premium Oak Woodgrain	Walls / Ceiling

Kitchen

Counter Top Prime Laminat Wicked Soft-Matt	Cabinetry Bestwood Melamine Brulee Velvet	Glass Splashback over Jet Stream

Paint Colour per Wall



Interior Colours 3 - Shoreline

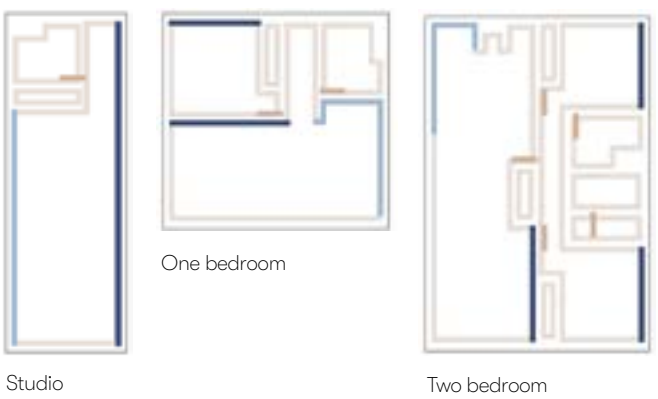
Enjoy the calming colours of the beach and ocean, with this palette inspired by the colours of the New Zealand shoreline.

All interior paint colours are from the Resene Collection.

General

Comfort Zone	Takaka
Spring Wood	Cashmere

Paint Colour per Wall



General

Feature walls Takaka	Primary walls Spring Wood	Secondary walls Comfort Zone	Ceiling Spring Wood
Interior doors Cashmere	Blinds Block-out Roller Sand-Fancy	Floorscape Laminate Bleached White Teak	Carpet NZ wool loop pile, Armure Portico (2 Bedroom Apartments)

Bathroom

Tiles Glazed Porcelain, Firenze Grigio	Vanity top Prime Laminat Devious Soft-Matt	Vanity Cabinetry Prime Melamine Nordic Ash Velvet	Walls / Ceiling, Spring Wood

Kitchen

Counter Top Prime Laminat Portofino Suede	Cabinetry Bestwood Melamine Indian Ink Embossed	Glass Splashback over Comfort Zone

Building Specifications

LOCATION	ELEMENT	TYPE
	foundations	in-situ concrete
	basement	precast panels
	suspended floors	Comflor
	insulation	floor, wall, cieling, R-value to achieve Homestar 6 rating or higher
envelop	roofing	longrun steel
	downpipes	coloursteel
	cladding level 1 & 2	Kingspan dri-design
	cladding ground floor & basement	precast concrete in NOE formliners, anti graffiti sealant
external joinery	windows & doors	thermally broken aluminium
	glazing	double-glazed, laminate glass for acoustics, low-e / UV coating as appropriate
	entry doors	partially glazed, individual applied detailing as per apartment name
	hardware	powdercoat to match joinery
linings	cieling & wall typical	standard plasterboard, painted
	cieling & wall wet area	GIB aqualine, painted
finishes	skirting & trims	painted pine
	floor covering - hard	Laminate over acoustic underlay
	floor coverings - soft	heavy duty wool carpet in bedrooms and hall (two bed apartments)
	floor coverings - wet	600x600 porcelain tile over acoustic underlay
	splashbacks	glass
	blinds	block-out roller blinds, sand-fancy
internal joinery	internal doors	painted hollow core
	kitchen cabinetry	cutom-built, Prime Melamine & Bestwood Melamine has Environmental Choice NZ accreditation
	kitchen benchtop	Prime Laminate
	bathroom cabinetry	Melemine, custom vanity unit
	bathroom vanity top	Prime Laminate
	hardware	brushed nickel
plumbing fitout	shower	600x600 porcelain tiled, frameless, slide rail
	WC's	Adesso Mila, back to wall, soft close seat, 4.5/3L max flush for Homestar
	vanity basin	ceramic sit-on-top bowl
	bathroom tapware	Levivi Milan extended basin mixer
	kitchen sink	Mercer Everglade Single Bowl with Drainer
	laundry tub	1 stainless tub per floor located in the shared laundry
	kitchen tapware	Paini Parallel Sink Mixer
appliances	HWC	135L (1 bed units) or 180L (2bed units)
	living room heating	heat pump system
	bedroom heating	electric panel heater
	bathroom heating	wall-mounted electric
	cooktop	4 Electric Elements, black ceramic glass, satin chrome control dials built-in oven, Fisher & Paykel
	oven	single compact 55L 9 function oven, Fisher & Paykel
	rangehood	60cm powerpack rangehood, stainless steel, Fisher & Paykel
	dishwasher	built-in single drawer dish drawer, stainless steel, Fisher & Paykel
	refrigerator	Haier 342L Bottom Mount Fridge / Freezer
	washer & dryer	Each floor will have a shared laundry facility with: two Bosch 8Kg washing machines 1400rpm 14 wash programs two Bosch 8Kg Condensor dryers
lighting	typical downlights	dimmable LEDs
	feature lighting	LED wall washer in living space
	kitchen	feature pendants
	exterior	LED lightitng for wayfinding and security

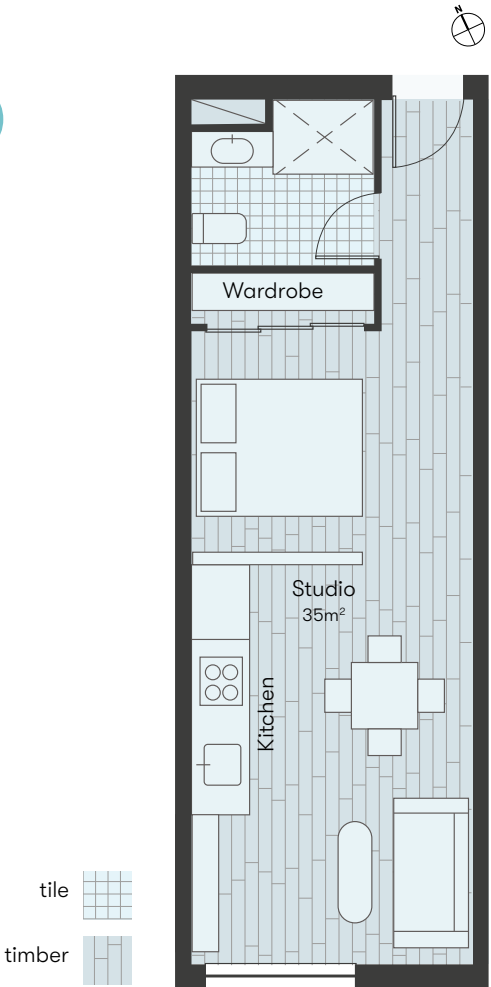


Note: All specifications are based on products available in 2020, the selection of colours and exact products may change between now and the time of purchase. In the event the same product is unavalble, asimilar product will be selected.



Studio

- Level 1**
3 studio apartments
- Level 2**
3 studio apartments



The apartments will be ready for you to move in. They are finished with appliances, light fixtures, kitchen and bath cabinets as well as a built in wardrobe. There will be floor to ceiling windows with a Juliet balcony in every apartment. Each apartment's windows vary. Please refer to the overall plans for details.



One bedroom



- Level 1**
4 one bedroom apartments
- Level 2**
4 one bedroom apartments

All one bedroom apartments will have the same high level of finish as the studios. Encompassing a larger area, these will include a separate bedroom and feature additional windows. Please refer to the plans for exact window layouts.

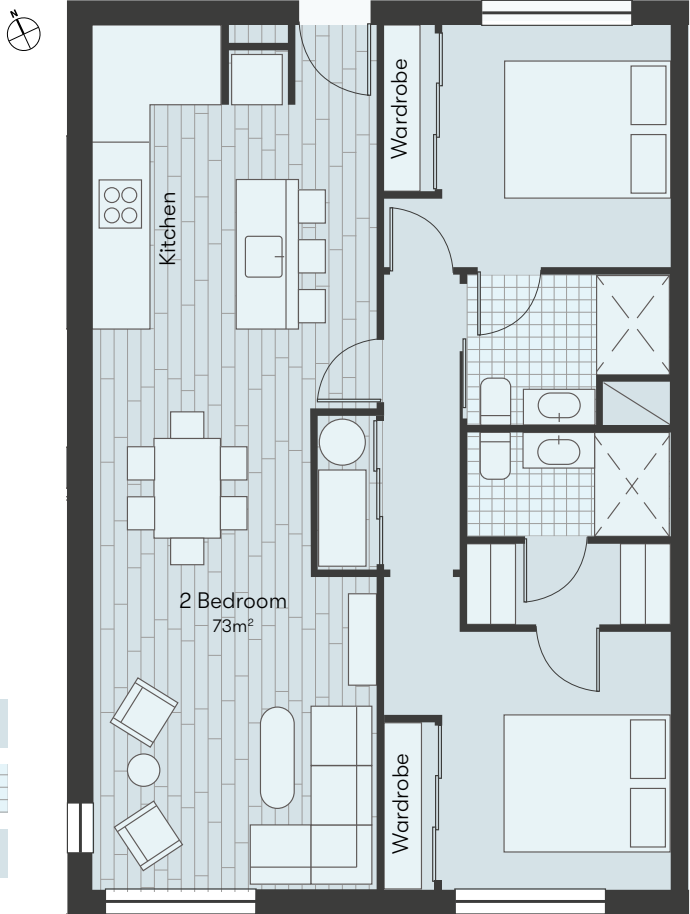


Two bedroom

- Level 1**
3 two bedroom apartments
- Level 2**
3 two bedroom apartments

All two bedroom apartments will have the same high level of finish as the studios and one bedroom apartments. These will also include two separate bathrooms, two wardrobes and additional storage closets. Please refer to the plans for exact window layouts.

- carpent
- tile
- timber



Shared rooftop

- Kitchenette
- Tables for individuals or groups
- Lounge chairs
- Planters
- Multi-purpose space for events
- Lift and stair access



Level 2

Owner occupied or long term rental apartments

- 3 studios
- 4 one bedroom apartments
- 3 two bedroom apartments
- Patio
- Shared laundry
- Lift and stair access



Level 1

Owner occupied, long term or short term rental apartments

- 3 studios each
- 4 one bedroom apartments
- 3 two bedroom apartments
- Patio
- Shared laundry
- Lift and stair access

